



ADDITIONAL / TO FOLLOW AGENDA ITEMS

This is a supplement to the original agenda and includes reports that are additional to the original agenda or which were marked 'to follow'.

NOTTINGHAM CITY COUNCIL OVERVIEW AND SCRUTINY COMMITTEE

Date: Wednesday 6 September 2017

Time: 2.00 pm

Place: Ground Floor Committee Room - Loxley House, Station Street, Nottingham, NG2 3NG

Senior Governance Officer: Laura Wilson **Direct Dial:** 0115 8764301

AGENDA

Pages

- 5 FLY-TIPPING IN NOTTINGHAM**
Report of the Head of Legal and Governance

3 - 28

This page is intentionally left blank

Waste Management Briefing Overview & Scrutiny

- Service overview
- Legislative Position
- Waste disposal and recycling
- Commercial Waste

Nottingham City Council

Service overview

- Population – 318,901
- Households – 135,000
- Number of household bins collected each year – 8,242,000
- Household waste collected – 113,192 tonnes
- Number of Commercial bins / skips collected each year – 350,000
- Total waste collected and disposed of – 157,967 tonnes

Issue	Legislative Position	NCC Policy
Side Waste	Limited by virtue of S.46 EPA	No specific limit
Garden Waste	Chargeable for collection under Schedule 2 of the Controlled Waste Regulations	Provided free of charge
Bulky Waste		Provided free of charge and without restriction
Contamination	Prohibited under S.46 of the EPA	Free collection as a 'missed bin'

What is Fly tipping?

Fly-tipping is the illegal deposit of waste on land. Fly-tipping differs from littering in that it involves the removal of waste from premises where it was produced with the deliberate aim of disposing of it unlawfully, or as a result of legitimate outlets not being available.

Page 6

The offence of fly-tipping, and the additional offences of 'knowingly causing' or 'knowingly permitting' fly-tipping, are set out in [Section 33\(1\)\(a\) of the Environmental Protection Act 1990](#). Section 33 is enforceable by both the Environment Agency and the local authorities.

Responsibility?

Anyone who produces waste has a duty of care under [section 34 of the Environmental Protection Act 1990](#) to ensure that it is disposed of properly.

Page 7

Therefore a person may be guilty of an offence under [section 34](#) if their waste has been found to be dumped, even if the dumping was carried out by someone else. The duty applies to both [businesses](#) and [householders](#).

What is Side Waste?

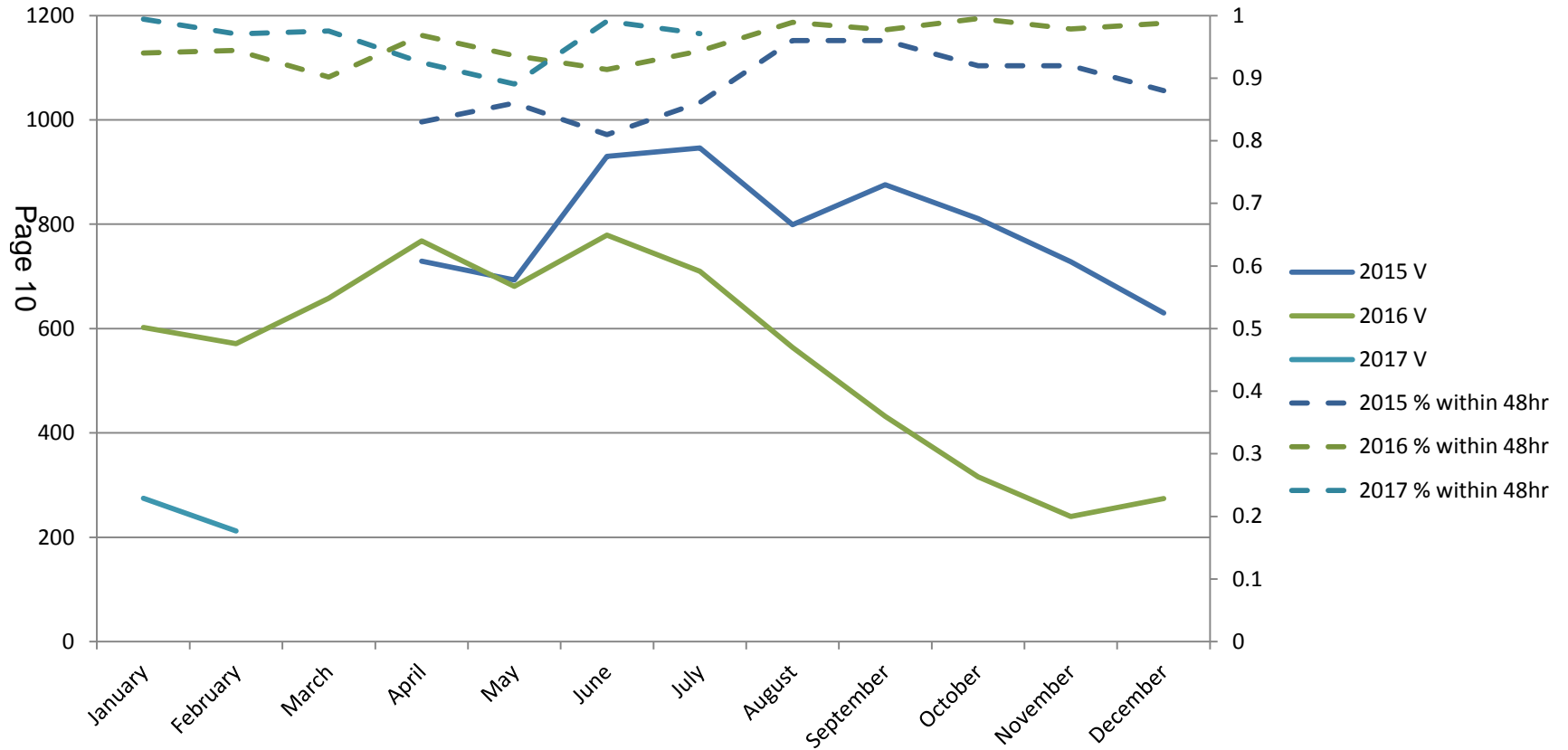
- Side waste is excess, unauthorised bags or waste from the household, which is presented for collection at the side of the wheelie bin.
- NCC has no side waste policy – residents can leave unlimited numbers of bags.

Implications of collecting side waste?

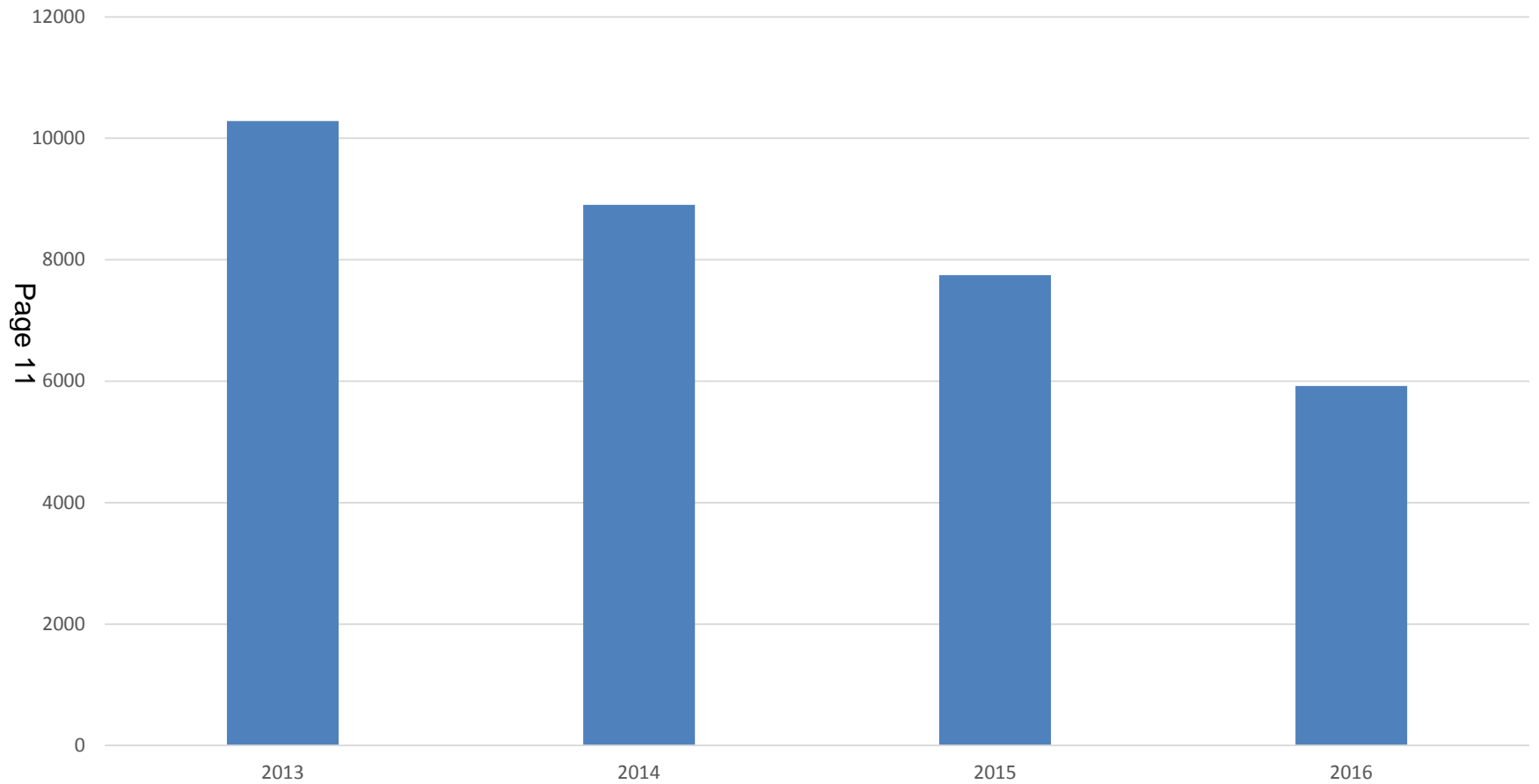
- Generally, it is not recycled, and goes straight to landfill.
- It means vehicles are running both heavier and more frequently to the landfill sites.
- Bin lids being in any sort of upward position mean that they are not safe to empty, because of a precarious load as the bin goes up on the lifters - endangering staff and anybody else nearby during refuse collection work.

Fly tipping

Fly Tipping 2015 - 2017



Fly tips per Annum



Free Bulky Waste Service

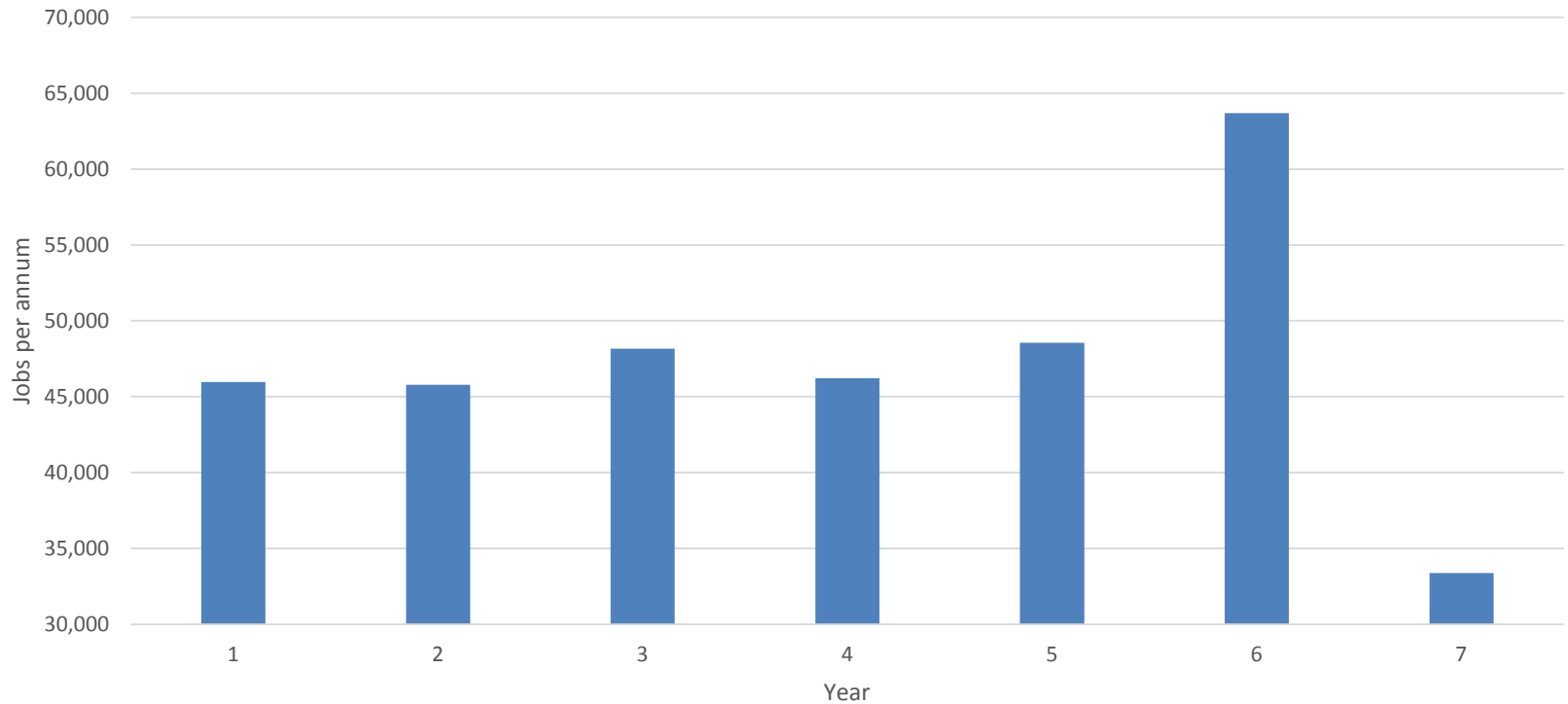
The service is designed around the following core principles:

- The service is free
- The number of collection per household is not limited
- The number of bulky items per collection is not limited
- It is a weekly kerbside collection
- The collections will be distributed across 5 collection zones based on Ward boundaries
- The restrictions on type of item should be as few as possible – fixtures and fittings included
- The service should be offered to Nottingham City residents only

Bulky Waste jobs per annum

2011	2012	2013	2014	2015	2016	2017
45,977	45,778	48,157	46,205	48,543	63,691	33,374

Bulky Waste per Annum from 2011



Nottingham Let's keep it clean



Fly-tipping

- 4% YOY



Dog Fouling

- 11% YOY

150

Clean Champions
signed up



+11%*

rise –in number of people
aware of dog fouling PSPO



36%*
picked up litter

66%*

remembered seeing
clean artwork



+ 45%

YOY – hits to bulky
waste online



2863

Facebook engagements
(shares and likes)

371k

Facebook reach



12.8k

Twitter engagements
(including 926 retweets)

753k

Twitter reach

*of survey respondents – sample size 1000

32 Te



23/26 Te Narrow



18 Te HTA/Bulky



3.5 Te Luton



Auto Split Lift



Page 16

- Independent bin lifts
- Automatic bin lifts
- Electric
- High rake hopper
- <350 bins per hour
- Ideal for domestic waste

Trade Lift



- Heavy duty lift
- Mid-level rake
- Manual operation
- Ideal for large containers

Open Back



- No lifting mechanism
- Reduced vehicle weight
- Reduced purchase cost
- Improved reliability
- Low rake level
- Ideal for handling bulky items

Bin Colour	Asset Number	Replacement
Green	124,219	3.13%
Grey	109,651	2.29%
Brown	89,766	1.61%
Total	323,636	2.42%

Annual Cost = £140 – 160k

















proud

Page 26





Questions?